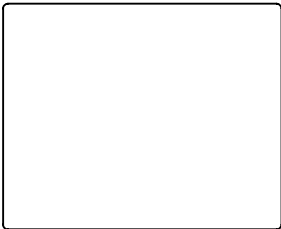
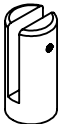





# Partition Extender / PEXXXXX-H Hardmounted Unit

## Installation Instructions



**Step 1:** Remove and unpack the Acrylic Panel, Brackets, and Hardware.

 <p>Acrylic Panel</p>	 <p>Standoff with Nylon Set Screw</p>	 <p>1" Wood Combination Screw 5/16-18</p>	 <p>(1) 1/8" Allen Wrench</p>	 <p>(1) 3mm Allen Wrench</p>
---	--	--	--	---

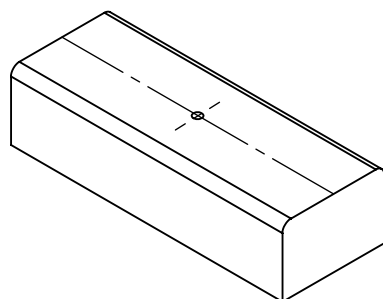
Note: Custom sizes with panel width larger than 72" will receive 4 sets of brackets. Standard sizes with panel width larger than 48" will receive 3 sets of brackets, all smaller sizes will receive 2 sets.

**Step 2:** Scribe a line along the middle of your partition.

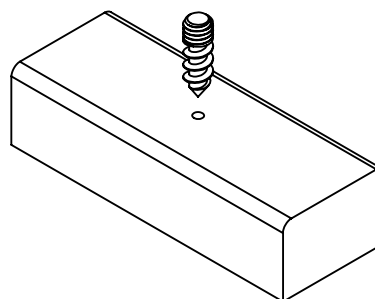
**Step 3:** Mark positions along the line based on the chart below.

Panel Width	Location 1	Location 2	Location 3
24"	2"	22"	-
29"	2"	27"	-
36"	2"	34"	-
42"	2"	21"	40"
48"	2"	24"	46"
59"	2"	29-1/2"	57"

**Step 4:** Using an 1/8" drill bit, pre-drill all marked locations along the line.



**Step 5:** Install the combination screws in the pre-drilled holes using the 1/8" Allen Wrench. Run the screws in sharp side down. Do not use the smaller 3mm Allen Wrench.

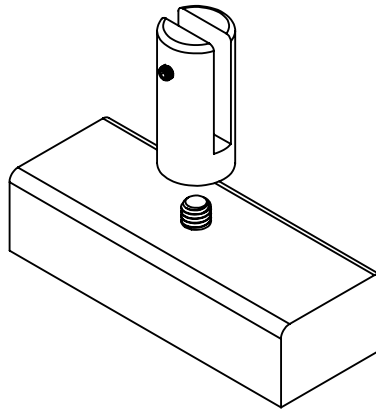


# Partition Extender / PEXXXXX-H

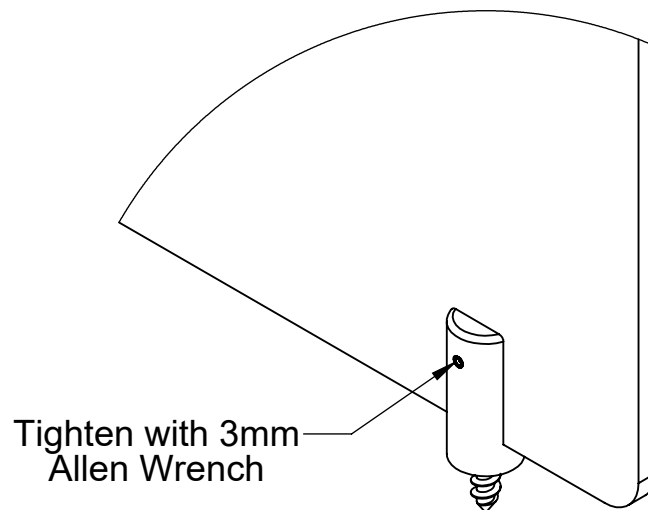
## Hardmounted Unit

### Installation Instructions

**Step 6:** Thread the Standoff onto the exposed screw head and align the slot parallel with the marked line.



**Step 7:** Slide the acrylic panel into the Standoffs. Secure the panel by tightening the set screws in the panel bracket with the provided 3mm Allen wrench.



**Step 8:** Recycle all packaging in accordance to local regulations.