

Reason  
9506

UPHOLSTERY

UPHOLSTERY

Reason 9506

Specifications

Content	53% pre-consumer recycled polyester 47% post-consumer recycled polyester
Weight	13.0 ± 1.0 oz./lin. yd.
Width	54" min. useable
Repeat	.1875" vertical and horizontal
Backing	acrylic backcoating

Cleaning Code

Standard Care Label W-S. Clean with water based cleaning agents, foam or pure, water free solvents. Vacuuming or light brushing is recommended to prevent dust and soil buildup.

**Bleach Cleanable** - May be cleaned with a 10% bleach-to-water solution. Rinse well after cleaning. May also be disinfected with hydrogen peroxide, alcohol, and quaternary ammonium (quat) based cleaners.






Miscellaneous

Proudly woven in North America supporting our local communities.

Application testing of this product is recommended.  
Colors may vary between dye lots. This is a directional fabric.

Visit [guilfordofmaine.com](http://guilfordofmaine.com) for samples.

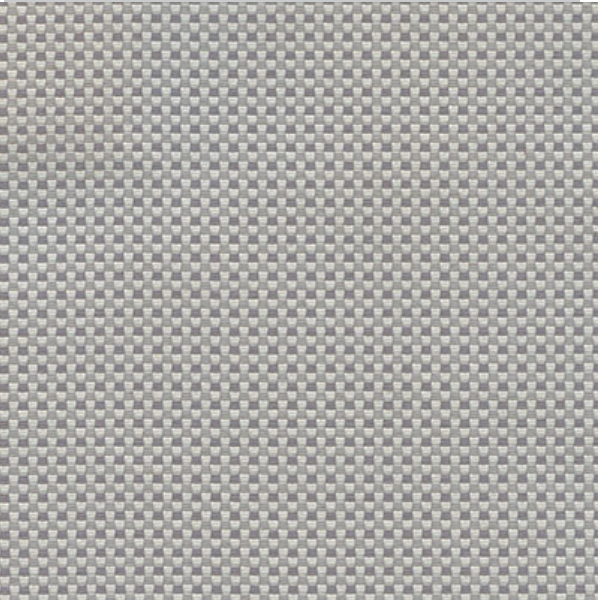
Performance

	Colorfastness to Light (AATCC 16.3 Option 3) <b>Grade 4 min. at 40 hours</b>
	Colorfastness to Crocking (AATCC 8) <b>Grade 4 min. dry &amp; Grade 3 min. wet</b>
	Breaking Strength (ASTM D5034) <b>200 lbf warp and 250 lbf fill</b>
	Seam Slippage (ASTM D4034) <b>70 lbf warp and 50 lbf fill</b>
	Pilling Resistance (ASTM D3511) <b>Class 4 min.</b>
	Flammability <b>CA Technical Bulletin 117-2013 Section 1</b>
	Abrasion (ASTM D4157) <b>100,000 double rubs cotton duck</b>

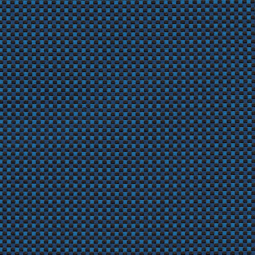
Sustainability



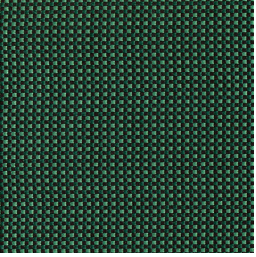
\*Certification Marks owned by the Association for Contract Textiles, Inc.



Silver  
3010



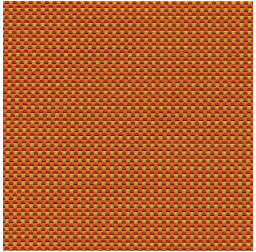
Blue  
3051



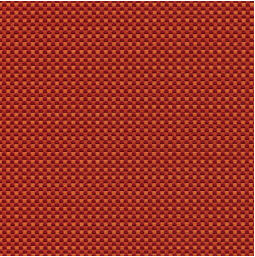
Jade  
3055



Honey  
3100



Orange  
3090



Fire  
3022



Amber  
3030